



**Making the outdoors better since 1958!**

## **Hennepin County Annual Update**

Presented by Alex Carlson, Public Affairs Manager

Thursday, February 5th, 2026

# Metropolitan Mosquito Control District

- Established in state statutes in 1958
- Governed by a board of 18 elected County Commissioners
  - Commissioner Kevin Anderson (Exec. Committee)
  - Commissioner Angela Conley
  - Commissioner Heather Edelson
- 2,977 square mile service area
- Population 3,200,000+
- 88,000 wetland habitats
- 30,000 woodland habitats
- Funded by property taxes from residents.
  - Median home pays about \$11.00/year





# Integrated Pest Management

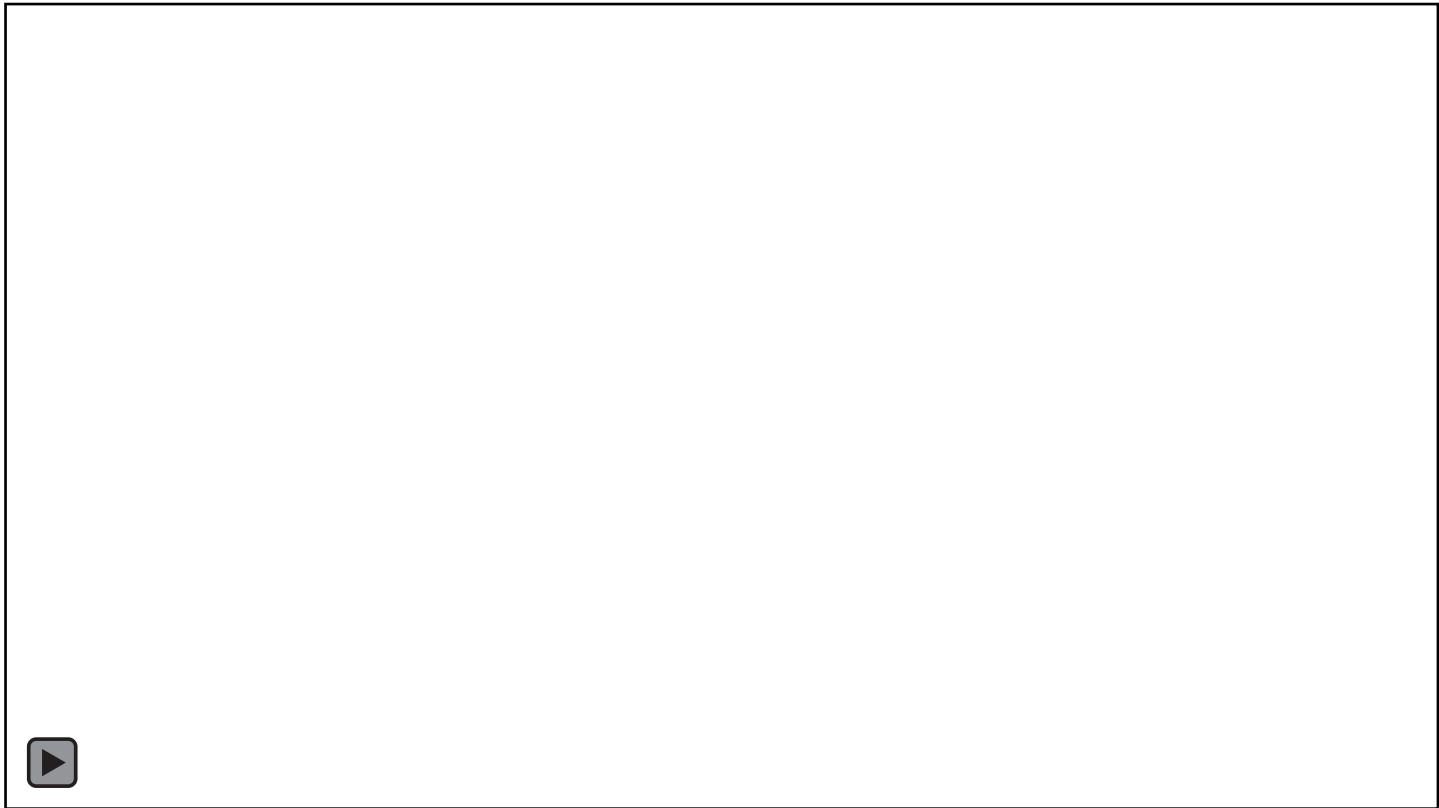
**SURVEILLANCE** – Find larval and adult mosquito activity.

**IDENTIFICATION** – Determine species of collected mosquitoes.

**CONTROL** – Use effective, environmentally sensitive methods to control target species.

**REVIEW** – Ensure applications were effective with minimal impact to non-target species.

**EDUCATION** – Provide updates on mosquito activity and teach people to protect themselves.



# Other MMCD Services

**Black Fly (Biting Gnat) surveillance and control in rivers and streams.**

**Tick population monitoring and tick-borne disease education.**

**Website with interactive maps, educational data, and weekly reports.**

**Source reduction to remove mosquito habitat like waste tires.**



# Big Stories from 2025

## Record Year for West Nile

- 45 Human Cases (previous record = 28)
- 25,000 Mosquitoes Tested, 18.7% were positive
- Disease activity peaked earlier than normal.



## Cattail Mosquitoes Return

- Highest number collected since 2020.
- Numbers peaked the week of July 8<sup>th</sup>.
- Extra treatments kept them below projection.



## Spring Mosquitoes Absent

- 2023 set a record, 2024 was close behind, and 2025 had very few.
- Low precipitation in spring was likely the cause.





# Insect Abundance



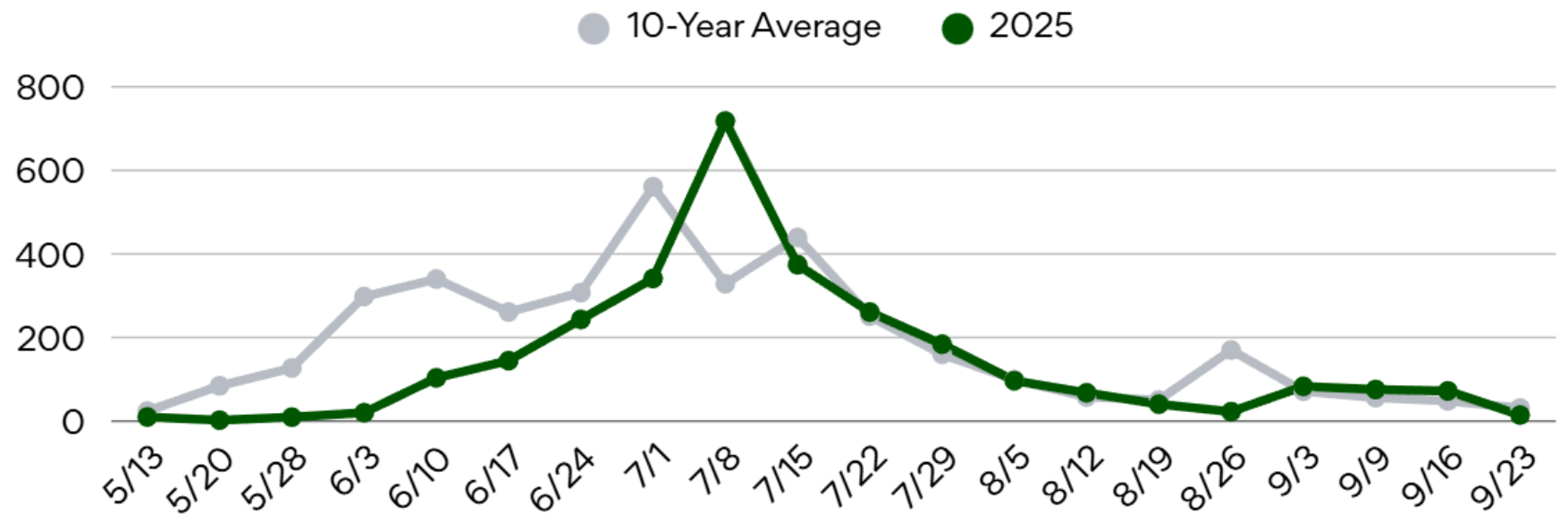
**2025 Peak:** Week of July 8<sup>th</sup>

7 Weeks Were Above  
Average

13 Weeks Were Below  
Average

**Most abundant species:**  
*Coquillettidia perturbans*  
(cattail mosquito)  
*Aedes vexans* (summer  
floodwater mosquito)

Weekly Average of Human-Biting Mosquitoes in CO2 Traps





# Larval Control



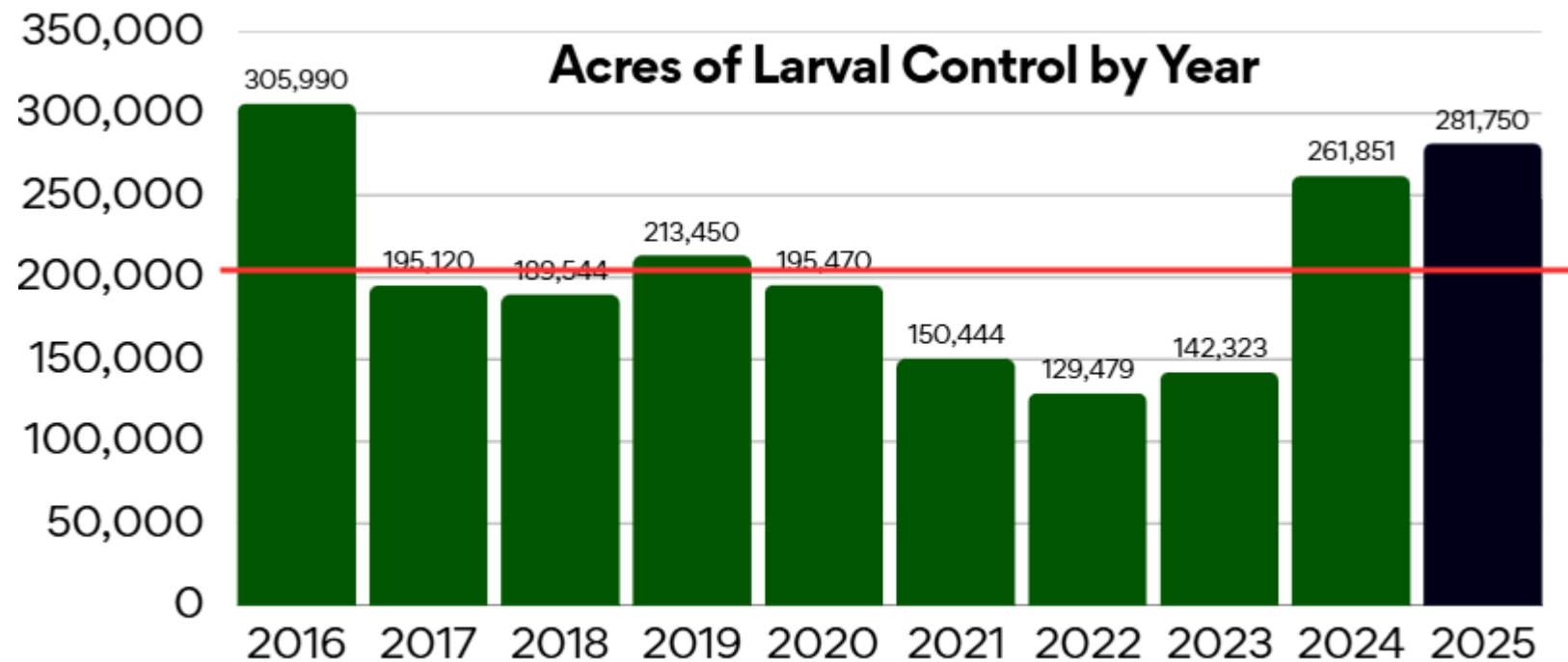
Most Acres Treated Since 2016!

- **247,187 acres** by helicopter
- **12,744 acres** by drone
- **16,295 acres** by hand or backpack

**8 Drones** were in use in 2025 and for the first time drones were used at every facility.

**Drone acres tripled** from 2024 to 2025.

Most common used active ingredients were *Bti* (1.32 million lbs) and Methoprene (0.25 million lbs)



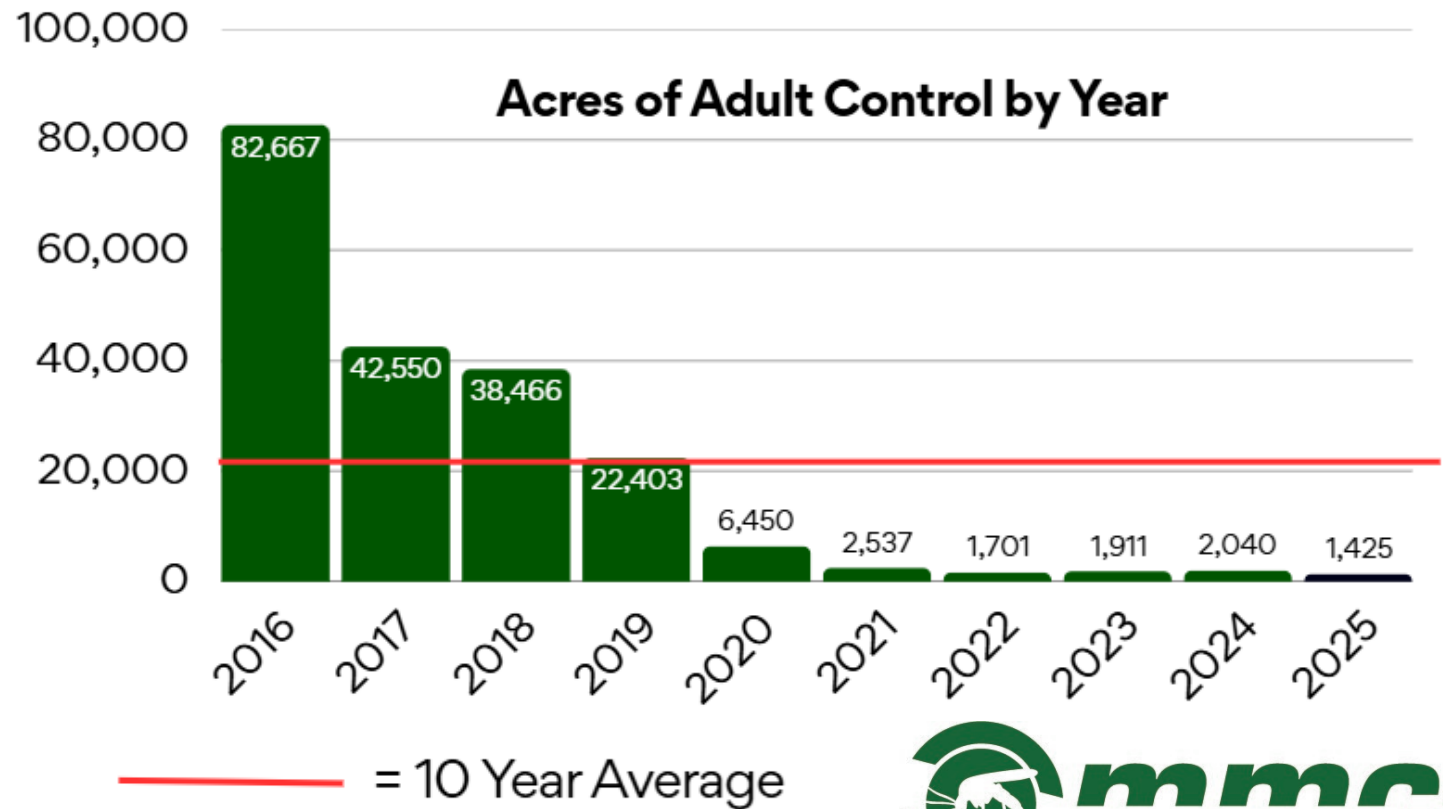
— = 10 Year Average

# Adult Control

Fewest acres of Adult Control in 25 years.

Adult control using a backpack applicator or truck/ATV mounted cold fogger is primarily used to suppress disease vectors.

Primary active ingredients used are Permethrin and Etofenprox.



# Hennepin County 2025

	2024	2025
Total Larval Inspections	22,157	<b>18,213</b>
Acres of Larval Treatment	66,872.71	<b>78,522.49</b>
Acres of Adult Mosquito Treatment	378.91	<b>231.24</b>
Catch Basin Treatments	47,248	<b>62,450</b>
Tires Removed and Recycled	1,454	<b>2,285</b>
Resident Inquiries (Calls/Emails)	671	<b>315</b>

# Tax Levy and Expenditures Budget

	2025	2026	Change
Amount Levied	\$20,502,106	\$21,590,768	\$1,088,662
Hennepin Co. Levy	<b>\$9,254,651</b>	<b>\$9,625,164</b>	<b>\$370,513</b>
Budget	\$21,352,106	\$23,282,100	\$1,929,994

Median home in Hennepin County pays \$11.00/year.





# Plans for 2026

- **Initiate new MMCD Strategic Plan** – focus on outreach and partnerships, resources and capacity, environmental sustainability, and expansion of IPM.
- **Focus on research** – Research Entomologist Dr. Caleb Corona and our lab staff will determine effective, safe ways to reduce disease and improve control.
- **Construction projects** – renovate the St. Paul lab and expand Maple Grove facility.
- **Expand Events and Presentations** – school presentations, city events, and more!



# Tire Procedure for 2026

Recycling waste tires is an important way to remove potential mosquito habitat. MMCD has had a tire recycling program for decades.

Recently, the number of requests have been increasing and there has been strain on staff time and resources.

In 2025 Dakota, Scott, and Carver Counties piloted tire drop-off events in lieu of residential pickups. This removed more tires while also saving staff time.

This will be expanded to all counties in 2026. Look for dates of the 2026 Hennepin County events coming soon!





# Frequently Asked Questions

**QUESTION: I'm having issues with mosquitoes (or black flies, ticks, etc.). What can I do?**

**ANSWER:** Visit the MMCD website and use the "Submit a Tip" form. There you will also find a Resident's Guide with 20+ tips for protecting yourself and live data about mosquito activity.

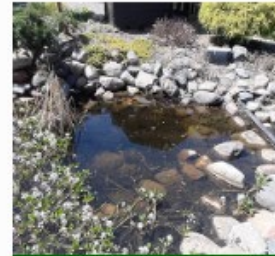
You can also call MMCD during business hours.

## Tips for a Mosquito-Free Yard

We have received lots of inquiries from residents looking for quick do-it-yourself mosquito control methods so we have developed this homeowners guide to help everyone. There are a number of steps that homeowners can take to reduce annoyance from mosquitoes including source reduction, material treatments, physical barriers, and wearing appropriate clothing and repellents. Follow the steps below and contact us if you need any more details!



**Eliminate  
Habitat**



**Control  
Larvae**



**Use Physical  
Barriers**



**Control  
Adults**



**Protect  
Yourself**

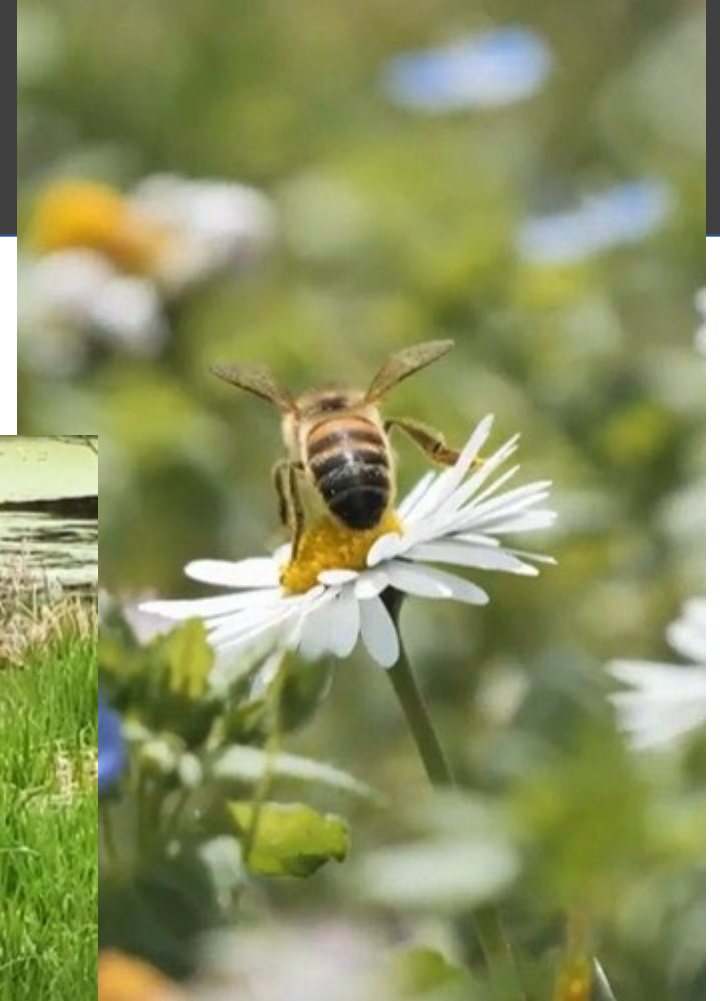
# Frequently Asked Questions

**QUESTION:** What products are you using and are they safe for me, my kids, pets, wildlife, pollinators, etc?

**ANSWER:** All of our products are listed on the MMCD website.

Larval control materials are specifically designed to target mosquitoes in water and have no toxicity to pollinators like bees or butterflies and no human health impacts.

Adult control materials are used sparingly and safely by trained staff.





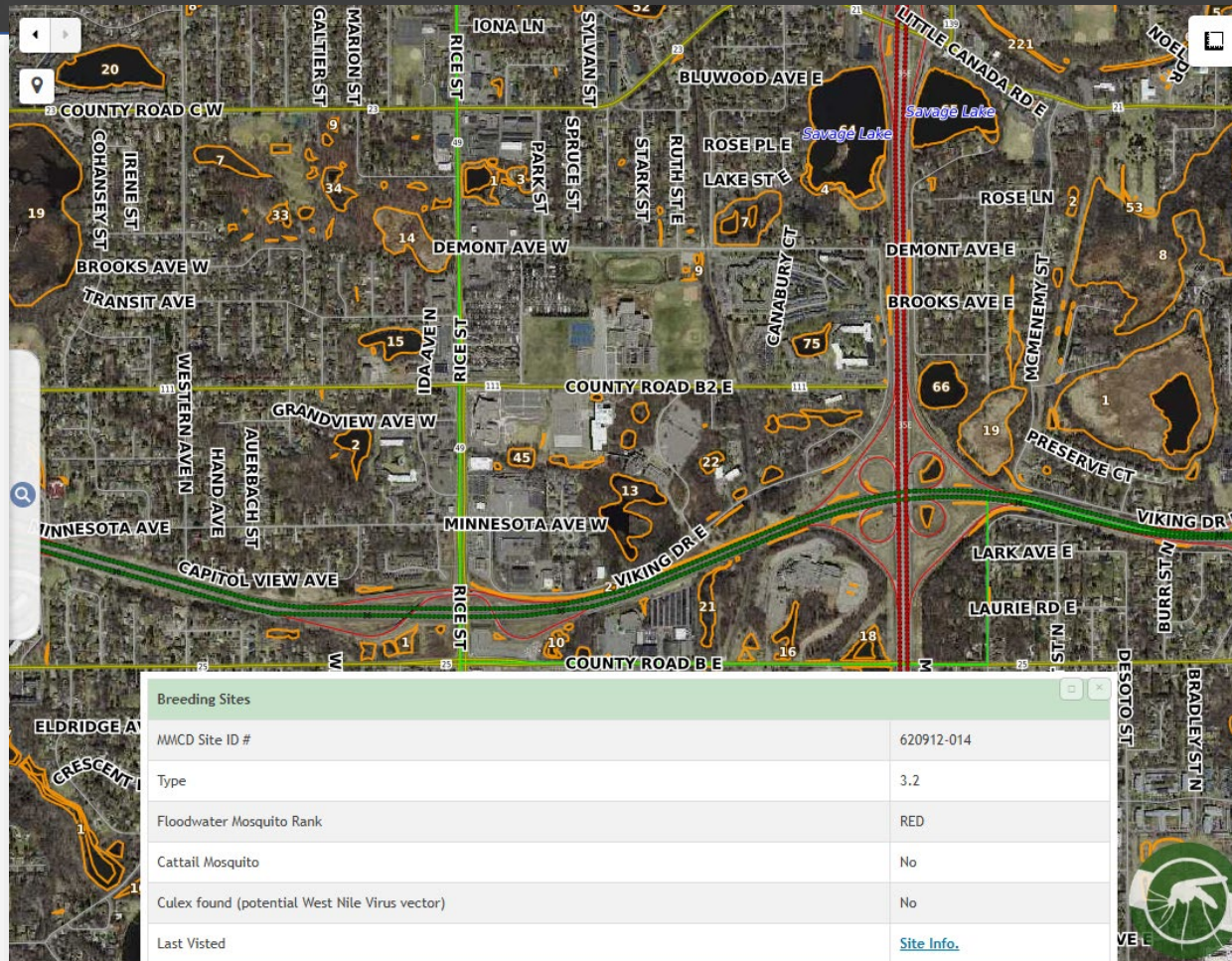
# Frequently Asked Questions

**QUESTION: Can I ride in the helicopter?**

**ANSWER: No.**



# MMCD Maps



- Public maps to view larval surveillance and treatment can be found at [MMCD.org](http://MMCD.org)
- Enter an address to zoom in and see wetland sites (outlined in orange) that are being monitored.
- Click on a site to view surveillance and treatment history.
- Data is updated in real-time during the season.



# Outreach

- Public education is an important part of MMCD's IPM program. This involves connecting with a variety of groups to present information and to listen.
- If you know of a group that MMCD should connect with, or an event that we should attend, please let us know!



# Questions/Comments?

**Alex Carlson**

Public Affairs Manager

[acarlson@mmcd.org](mailto:acarlson@mmcd.org)

**Daniel Huff**

Executive Director

[dhuff@mmcd.org](mailto:dhuff@mmcd.org)

**Lucas Griemann**

Regional Operations Manager

Maple Grove Facility

[lgriemann@mmcd.org](mailto:lgriemann@mmcd.org)

**Aubrey Soukup**

Regional Operations Manager

Plymouth Facility

[asoukup@mmcd.org](mailto:asoukup@mmcd.org)

**MMCD.org**

