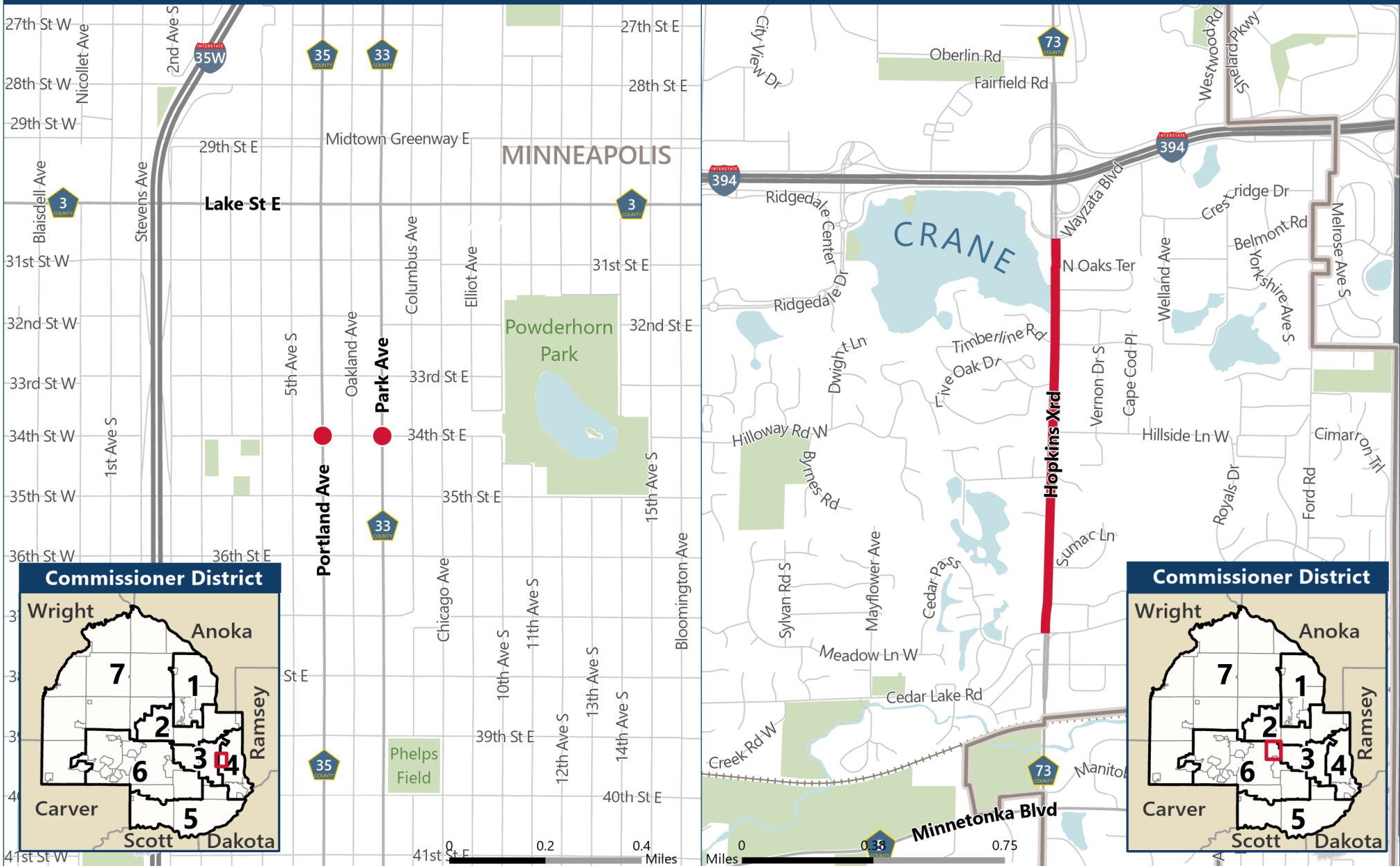


# CP 2201100 | PW 20-20-24 & PW 21-15-24

CSAH 33/35 (Park Ave/Portland Ave) and CSAH 73 (Hopkins Crossroad) Multimodal Improvements in Minneapolis and Minnetonka



**Disclaimer:** This map (i) is furnished "AS IS" with no representation as to completeness or accuracy; (ii) is furnished with no warranty of any kind; and (iii) is not suitable for legal, engineering or surveying purposes. Hennepin County shall not be liable for any damage, injury or loss resulting from this map.

Publication date: 3/19/2024

