



m m m c d
METROPOLITAN MOSQUITO CONTROL DISTRICT

Making the outdoors better since 1958!

Hennepin County Annual Update

Presented by Alex Carlson, Public Affairs Manager

Thursday, February 5th, 2026

Metropolitan Mosquito Control District

- Established in state statutes in 1958
- Governed by a board of 18 elected County Commissioners
 - Commissioner Kevin Anderson (Exec. Committee)
 - Commissioner Angela Conley
 - Commissioner Heather Edelson
- 2,977 square mile service area
- Population 3,200,000+
- 88,000 wetland habitats
- 30,000 woodland habitats
- Funded by property taxes from residents.
 - Median home pays about \$11.00/year



Integrated Pest Management

SURVEILLANCE – Find larval and adult mosquito activity.

IDENTIFICATION – Determine species of collected mosquitoes.

CONTROL – Use effective, environmentally sensitive methods to control target species.

REVIEW – Ensure applications were effective with minimal impact to non-target species.

EDUCATION – Provide updates on mosquito activity and teach people to protect themselves.



Other MMCD Services

Black Fly (Biting Gnat) surveillance and control in rivers and streams.

Tick population monitoring and tick-borne disease education.

Website with interactive maps, educational data, and weekly reports.

Source reduction to remove mosquito habitat like waste tires.



Big Stories from 2025

Record Year for West Nile

- 45 Human Cases (previous record = 28)
- 25,000 Mosquitoes Tested, 18.7% were positive
- Disease activity peaked earlier than normal.



Cattail Mosquitoes Return

- Highest number collected since 2020.
- Numbers peaked the week of July 8th.
- Extra treatments kept them below projection.



Spring Mosquitoes Absent

- 2023 set a record, 2024 was close behind, and 2025 had very few.
- Low precipitation in spring was likely the cause.



Insect Abundance

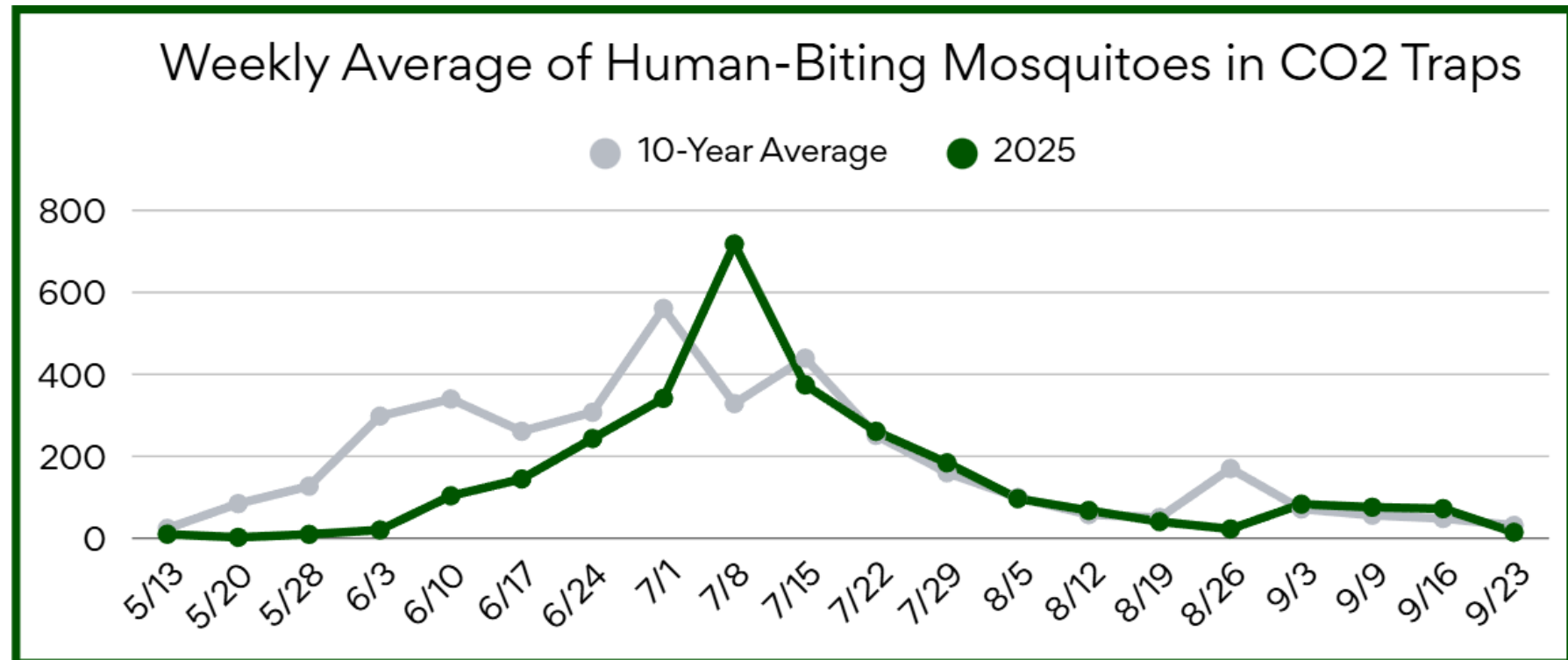


2025 Peak: Week of July 8th

7 Weeks Were Above Average

13 Weeks Were Below Average

Most abundant species:
Coquillettidia perturbans
(cattail mosquito)
Aedes vexans (summer floodwater mosquito)



Larval Control



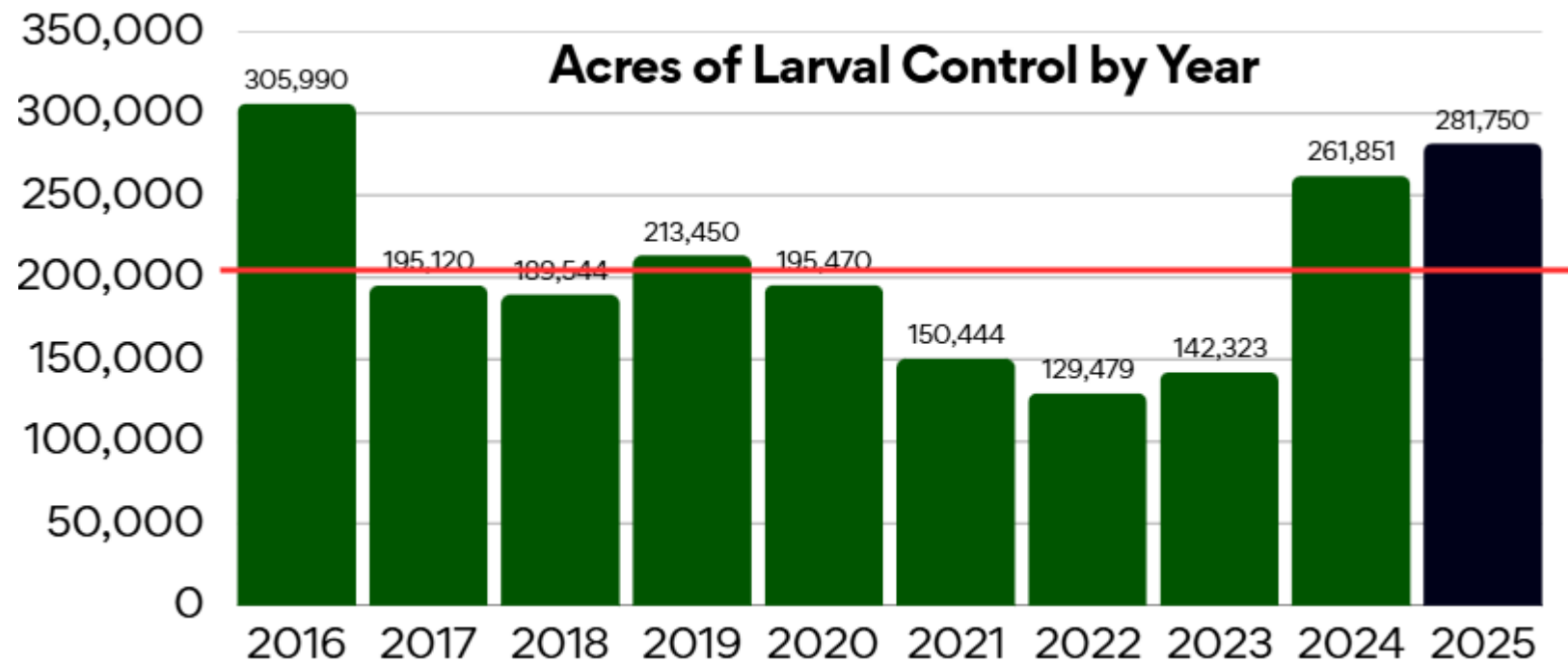
Most Acres Treated Since 2016!

- **247,187 acres** by helicopter
- **12,744 acres** by drone
- **16,295 acres** by hand or backpack

8 Drones were in use in 2025 and for the first time drones were used at every facility.

Drone acres tripled from 2024 to 2025.

Most common used active ingredients were *Bti* (1.32 million lbs) and Methoprene (0.25 million lbs)



— = 10 Year Average

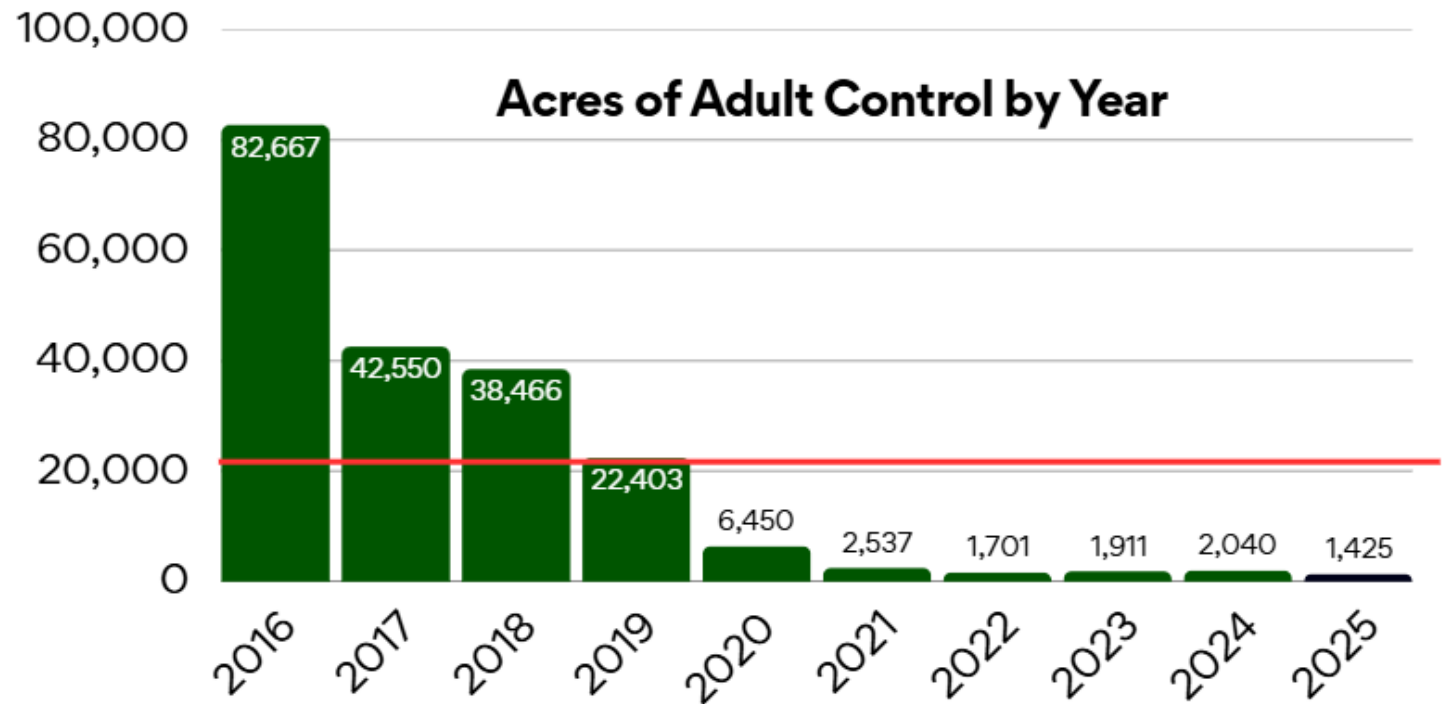
Adult Control



Fewest acres of Adult Control in 25 years.

Adult control using a backpack applicator or truck/ATV mounted cold fogger is primarily used to suppress disease vectors.

Primary active ingredients used are Permethrin and Etofenprox.



— = 10 Year Average



Hennepin County 2025

	2024	2025
Total Larval Inspections	22,157	18,213
Acres of Larval Treatment	66,872.71	78,522.49
Acres of Adult Mosquito Treatment	378.91	231.24
Catch Basin Treatments	47,248	62,450
Tires Removed and Recycled	1,454	2,285
Resident Inquiries (Calls/Emails)	671	315

Tax Levy and Expenditures Budget

	2025	2026	Change
Amount Levied	\$20,502,106	\$21,590,768	\$1,088,662
Hennepin Co. Levy	\$9,254,651	\$9,625,164	\$370,513
Budget	\$21,352,106	\$23,282,100	\$1,929,994

Median home in Hennepin County pays \$11.00/year.



Plans for 2026

- **Initiate new MMCD Strategic Plan** – focus on outreach and partnerships, resources and capacity, environmental sustainability, and expansion of IPM.
- **Focus on research** – Research Entomologist Dr. Caleb Corona and our lab staff will determine effective, safe ways to reduce disease and improve control.
- **Construction projects** – renovate the St. Paul lab and expand Maple Grove facility.
- **Expand Events and Presentations** – school presentations, city events, and more!



Tire Procedure for 2026

Recycling waste tires is an important way to remove potential mosquito habitat. MMCD has had a tire recycling program for decades.

Recently, the number of requests have been increasing and there has been strain on staff time and resources.

In 2025 Dakota, Scott, and Carver Counties piloted tire drop-off events in lieu of residential pickups. This removed more tires while also saving staff time.

This will be expanded to all counties in 2026. Look for dates of the 2026 Hennepin County events coming soon!



Frequently Asked Questions

QUESTION: I'm having issues with mosquitoes (or black flies, ticks, etc.). What can I do?

ANSWER: Visit the MMCD website and use the "Submit a Tip" form. There you will also find a Resident's Guide with 20+ tips for protecting yourself and live data about mosquito activity.

You can also call MMCD during business hours.

Tips for a Mosquito-Free Yard

We have received lots of inquiries from residents looking for quick do-it-yourself mosquito control methods so we have developed this homeowners guide to help everyone. There are a number of steps that homeowners can take to reduce annoyance from mosquitoes including source reduction, material treatments, physical barriers, and wearing appropriate clothing and repellents. Follow the steps below and contact us if you need any more details!



**Eliminate
Habitat**



**Control
Larvae**



**Use Physical
Barriers**



**Control
Adults**



**Protect
Yourself**

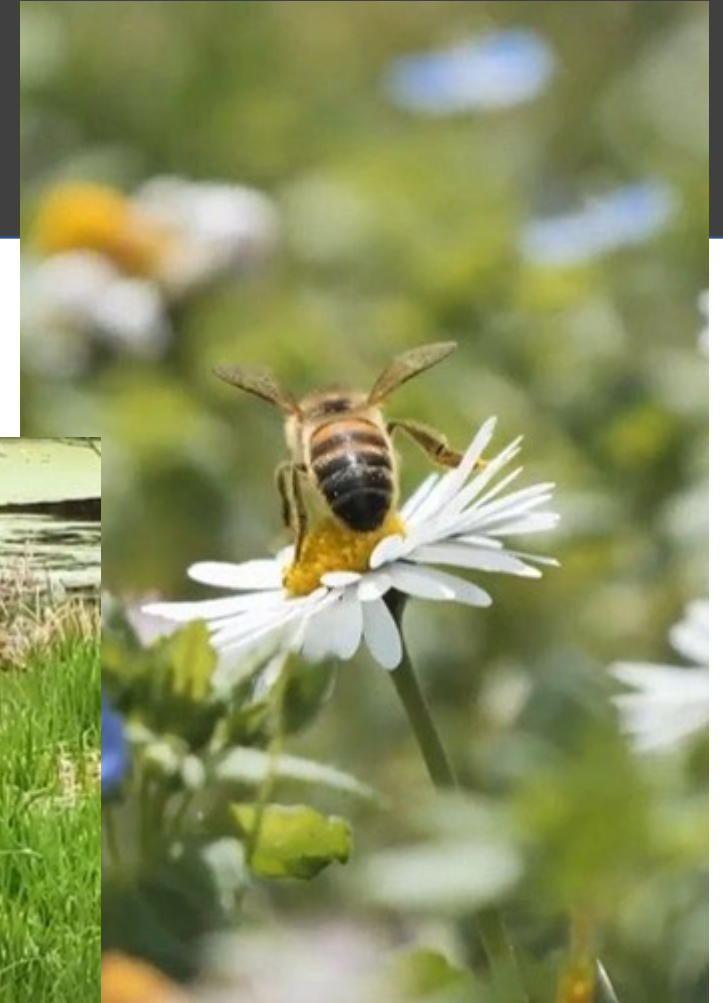
Frequently Asked Questions

QUESTION: What products are you using and are they safe for me, my kids, pets, wildlife, pollinators, etc?

ANSWER: All of our products are listed on the MMCD website.

Larval control materials are specifically designed to target mosquitoes in water and have no toxicity to pollinators like bees or butterflies and no human health impacts.

Adult control materials are used sparingly and safely by trained staff.



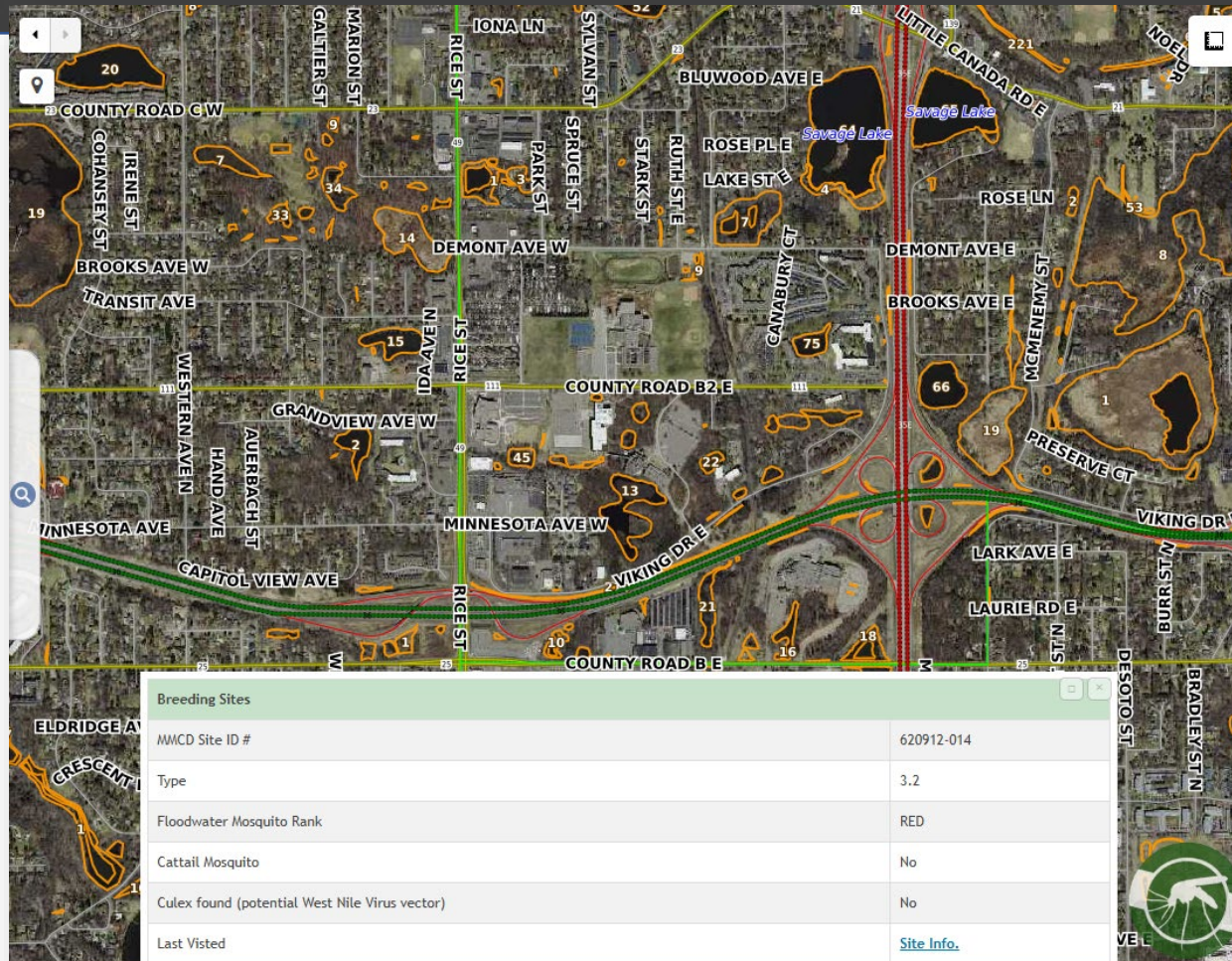
Frequently Asked Questions

QUESTION: Can I ride in the helicopter?

ANSWER: No.



MMCD Maps



- Public maps to view larval surveillance and treatment can be found at MMCD.org
- Enter an address to zoom in and see wetland sites (outlined in orange) that are being monitored.
- Click on a site to view surveillance and treatment history.
- Data is updated in real-time during the season.

Outreach

- Public education is an important part of MMCD's IPM program. This involves connecting with a variety of groups to present information and to listen.
- If you know of a group that MMCD should connect with, or an event that we should attend, please let us know!



Questions/Comments?

Alex Carlson

Public Affairs Manager

acarlson@mmcd.org

Daniel Huff

Executive Director

dhuff@mmcd.org

Lucas Griemann

Regional Operations Manager

Maple Grove Facility

lgriemann@mmcd.org

Aubrey Soukup

Regional Operations Manager

Plymouth Facility

asoukup@mmcd.org

MMCD.org

